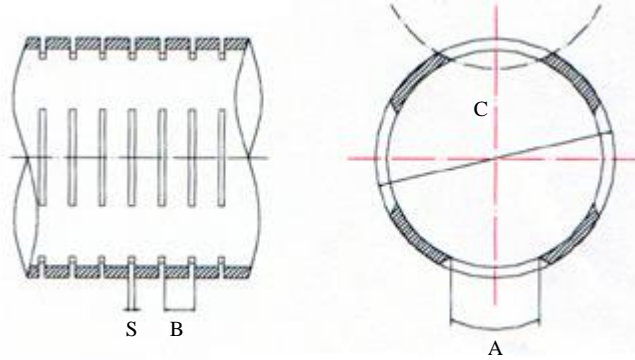


125MM CASING & SCREEN SPECIFICATIONS



Casing & Screen = 125mm OD x 6.35mm Wall x 114mm ID

S: Slot size = 1.0mm

B: Distance between slots = 6mm

A: Longitudinal size as per interior circumference = 65mm

C: Outside diameter = 125mm

D: Open area % = 10.0% - Flow Rate = 0.890 Lts/sec/m

Number of slots per meter = 660

Effective slotted Length = 2600mm or 5700mm

Overall Length = 2900mm or 5.800mm

Mass / meter = 3.58kg

Colour = Blue

DIN 4925 thread

MECHANICAL PROPERTIES

PROPERTY	STD.	UNIT	VALUE	TEST METHOD
Specific gravity	DIN ASTM	gm/cm ³	1.40 – 1.45 1.40	DIN 53479 D 792
Material make up	UPVC			UnPlastized Poly Vinyl Chloride
Modulus of elasticity	DIN ASTM	N/mm ² 105 psi	2500 – 3000 41	DIN 53457 D 638
Tensile Strength	DIN ASTM	N/mm ² psi	45 – 55 8000	DIN 53455 D 638
Notch impact strength at 20°C	DIN ASTM	kJ/m ² ft.lb. in	3.0 – 5.0 0.65	DIN 53453 D 256
Vicat softening temp.	DIN	°C	76 – 80	DIN 53460B
Deflection temp. under load (264 PSI)	ASTM	°F	158	D 648
Yield Strength	DIN	N/mm ²	55.0	-
Impact Strength	DIN ASTM	ft.lbs.	No fracture ASTM	DIN 53453 D 2444
Thread Specification	DIN 4925	Trapeziodal	M x F	Flush Threaded
Resistance to Hydraulic Collapse	125mm	psi	110	SDR Ratio 15.6
Max Depth setting	125mm	Meters	120M	